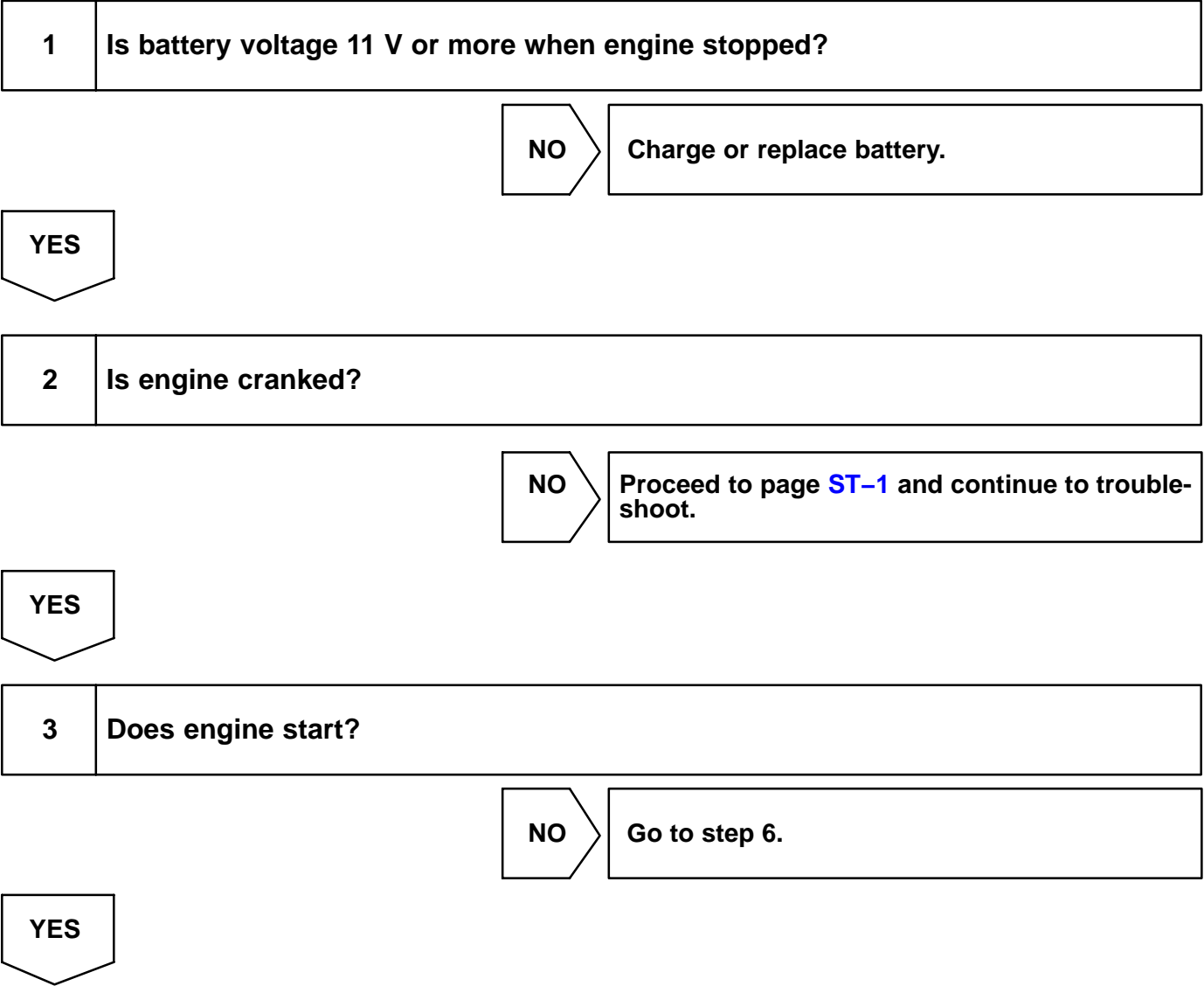


# BASIC INSPECTION

When the malfunction is not confirmed in the DTC check, troubleshooting should be carried out in all the possible circuits considered as causes of the problem. In many cases, by carrying out the basic engine check shown in the following flowchart, the location causing the problem can be found quickly and efficiently. Therefore, using this check is essential in the engine troubleshooting.



4	Check air filter.
---	-------------------

**PREPARATION:**

Remove the air filter.

**CHECK:**

Visual check that the air filter is not excessively dirty or oily.

NG

Repair or replace air filter.

OK

5	Check idle speed (See page <a href="#">EM-25</a> ).
---	---

NG

Proceed to problem symptoms table on page [DI-33](#).

OK

6	Check fuel pressure (See page <a href="#">SF-5</a> ).
---	---

NG

Proceed to page [SF-5](#) and continue to trouble-shoot.

OK

7	Check for spark (See page <a href="#">IG-1</a> ).
---	---

NG

Proceed to page [IG-1](#) and continue to trouble-shoot.

OK

Proceed to problem symptoms table on page [DI-33](#).